

# **FY 2017 BENEFICIAL USE OF DREDGED MATERIAL**

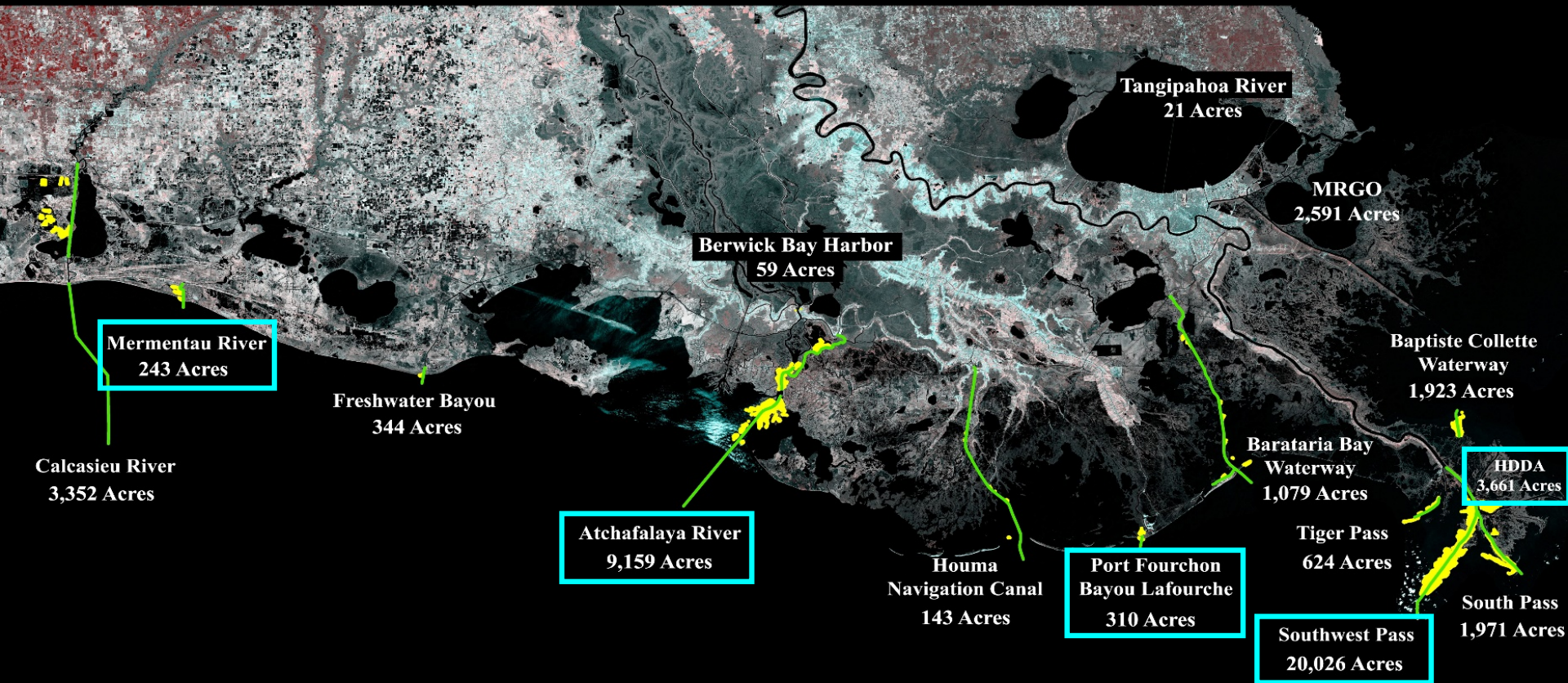
**Beneficially Placed - 25,131,497 CY**

**Wetland Habitat Created - 1,490 acres**

**Bird Island Habitat Created - 96 acres**



# Louisiana Coast Beneficial Use Placement



**Total Cumulative Acres Created (1976-2017)**

**42,798 Acres**

**(~67 square miles of land)**



**Beneficial Use Placement**



**Federal Authorized  
Navigation Channels**

**35,084 Acres - Marsh Habitat**

**3,791 Acres - Other Coastal Habitat**

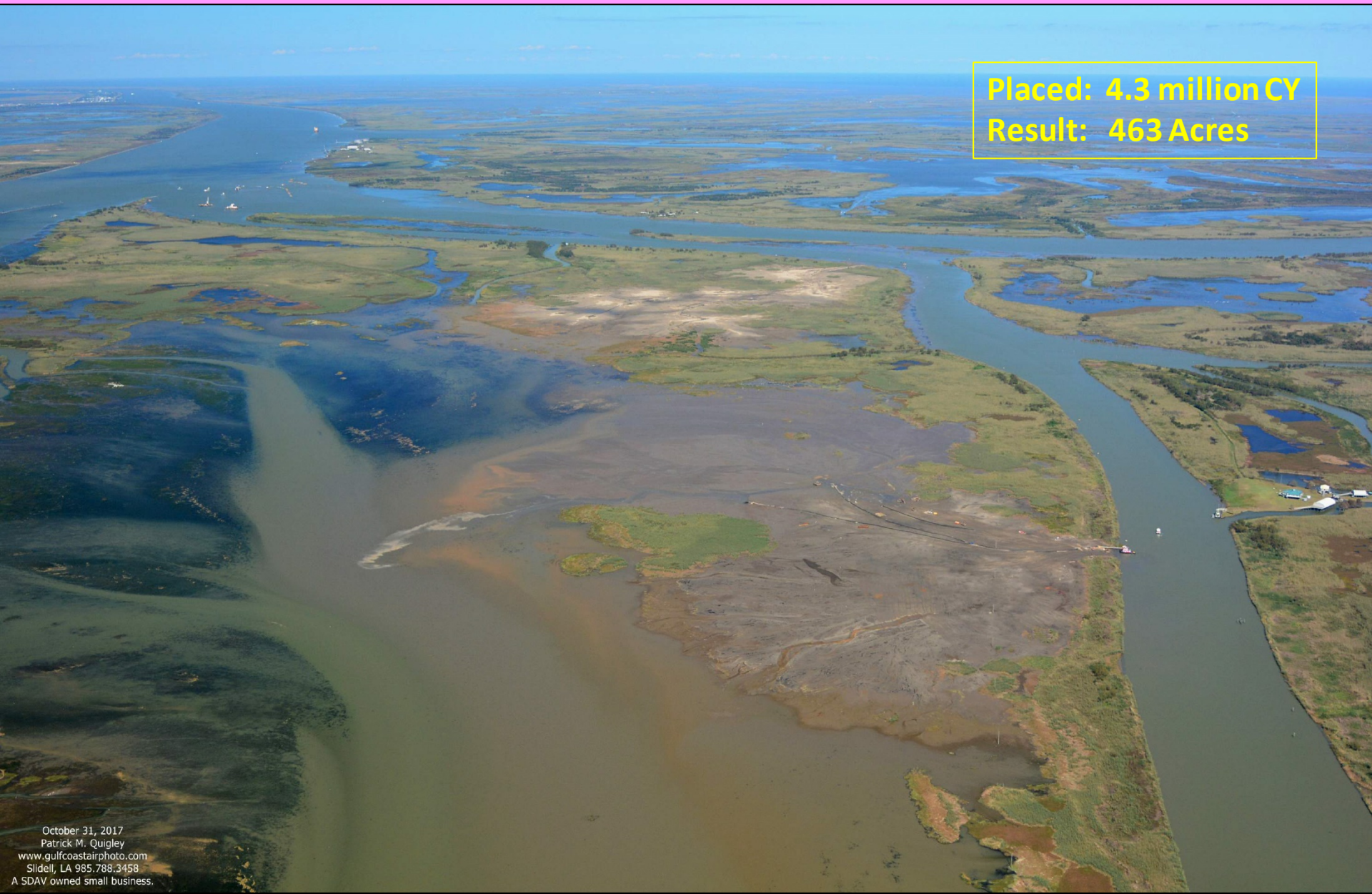
**3,923 Acres - Miss River Delta Upland Habitat**



# HDDA DREDGING

## SAWDUST BEND PLACEMENT (PASS A LOUTRE WMA)

Placed: 4.3 million CY  
Result: 463 Acres





# SOUTHWEST PASS DREDGING

## West Bay

### Mile 0.5 AHP Wetland Development

Placed: 1.4 million CY

Result: 258 Acres



Taken July 30, 2017

Patrick M. Quigley

[www.gulfcoastairphoto.com](http://www.gulfcoastairphoto.com)

Slidell, LA 985.788.3458

A SDAV owned small business.



# SOUTHWEST PASS DREDGING

## Mile 10.5 BHP Wetland Development

**Placed: 1.9 million CY**  
**Result: 170 Acres**

Southwest Pass

Outlet W-2

Taken May 01, 2017

Patrick M. Quigley

[www.gulfcoastairphoto.com](http://www.gulfcoastairphoto.com)

Slidell, LA 985.788.3458

A SDAV owned small business.



# SOUTHWEST PASS DREDGING

## Mile 17.8 BHP Wetland Development

**Placed: 1.7 million CY**  
**Result: 17 Acres**





# ATCHAFALAYA RIVER BAY/BAR DREDGING

## Aves Island

Placed: 2.6 million CY

Result: 96 Acres

